

GE Transportation

Hot boxes and hot brakes pose a significant safety and cost risk. To prevent extensive damage and loss of life in accidents caused by technical and human error, GE - Transportation developed the RAD monitoring system.

RAD detects potentially dangerous conditions and transmits measured data and alarms to remote displays to initiate appropriate action either automatically or by manual intervention.

Advances in technology, enhanced ergonomics, user interface standards, and modern operating systems have been optimally used in developing RAD.

RAD is a client-server based system. The server is basically responsible for data storage, communication with the client systems, control of railway equipment, and communication with outside equipment (OE), while the client serves as the user interface for RAD.

RAD

Remote Announcement Display



System Software Components

Visit us online at
www.gettransportation.com

RAD is comprised of the following software modules:

- Server module
- Application module
- Configuration module
- Statistics module
- Database converter module

The RAD application module is always connected to RAD server, but the configuration and statistics modules run independent of the server. The configuration module is used to configure the server. The statistics application calculates the various statistical values of RAD.

RAD System Operation

The RAD system can operate in the following modes:

Control center

This mode utilizes the RAD server, application, and statistics modules.

Field center

This uses the RAD server with a direct database connection. It is connected to the outside equipment. For small RAD systems, it is possible to run a RAD application on a field center.

Intelligent terminal mode

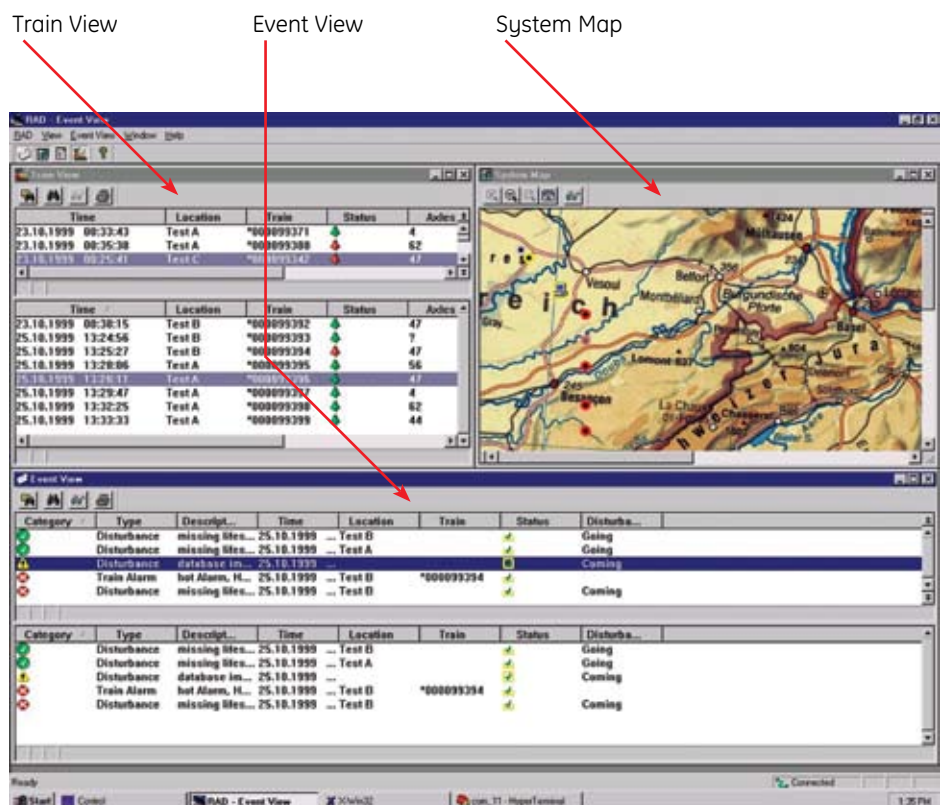
This has RAD application and server (without database support) running in it. In this case, the RAD server is connected only to a field center.

Dumb terminal mode

This has only the RAD application running in it.

RAD systems running in the control center or field center modes need Windows® Server as the operating system, but they can run in the terminal mode using Windows Server or Windows NT® Workstation.

Windows and Windows NT are registered trademarks of Microsoft Corporation in the United States and/or other countries.



GE imagination at work